

LUMS Graduate Admission Test (LGAT)

The LUMS Graduate Admission Test (LGAT) is a comprehensive assessment designed to evaluate a candidate's proficiency in three critical academic areas: Analytical Reasoning, Verbal Reading and Writing, and Mathematical Skills.

Test Format and Composition

All questions are presented in a multiple-choice format. While the exact number of questions is subject to change, the standard breakdown includes:

- **Verbal Section:** Approximately 30 questions focusing on reading comprehension and linguistic proficiency.
- **Mathematics Section:** Approximately 20 questions covering core quantitative concepts.
- **Analytical Reasoning Section:** Approximately 15 questions designed to test logical deduction and problem-solving abilities.

Timing and Administration

Each section is allocated roughly 35 to 40 minutes of testing time. Applicants are advised to manage their pace carefully to ensure they can address all questions within the allotted window for each segment.

Note: The university reserves the right to modify the test structure, content, or format at any time without prior notice. Applicants are encouraged to check the official admissions website regularly for any updates.

Sample Questions

The following questions are provided only as sample items to give applicants a general idea of the format, style, and level of difficulty of questions that may appear in different sections of the LGAT. The actual test is not limited to these examples and may include a wider range of question types.

For effective preparation, applicants are advised to practice GRE-style questions, as they closely reflect the skills and reasoning abilities assessed in the LGAT.

Analytical Section

1. Farhan normally works 7.5 hours per day and earns \$4.50 per hour. For each hour he works in excess of 7.5 hours on a given day, he is paid 1.5 times his regular rate. If Farhan works 10.5 hours on a given day, how much does he earn for that day?

(A) \$33.75
(B) \$47.25
(C) \$51.75
(D) \$54.00
(E) \$70.00

2. Analysis of crime records over the past two years in Riverton County shows that most homicide cases take place on the edges of the town. This is because, in many cases, the victim is abducted and taken to a relatively sparsely populated area before being killed.

All of the following, if true, would significantly weaken the above argument, EXCEPT:

(A) A surge in firearm permits over the last two years has contributed to a rise in homicide rates

(B) Abductions are often not documented alongside the homicide report in numerous cases

(C) Many homicides occur due to disputes over farmland, which is primarily located on the outskirts of town

(D) A separate police division handles criminal cases in neighborhoods near the town center, and those cases were excluded from this analysis

(E) There are many unpopulated areas within the town and close to the town center

3. The high dropout rate in elementary schools in rural Sukkur District is largely attributed to the fact that the curriculum is not taught in the children's native language. Young students struggle to engage with lessons presented in a language they do not use at home, which often leads them to leave school within the first few years.

Which of the following, if true, most strengthens this argument?

(A) School regulations state that a child cannot leave school without parental approval, and it is usually the parents who decide to withdraw their child

(B) A survey of rural elementary schools found that most students do not enjoy their lessons

(C) A study of Sindhi-medium schools in rural Sukkur found that children whose native language is Sindhi are less likely to drop out than children whose native language is Urdu

(D) School tuition has increased in recent years, making it financially difficult for parents to keep their children enrolled

(E) Girls are more likely to leave school than boys, primarily because parents place less emphasis on their education

4. One hour after Kamran started walking from Lahore to Gujranwala, a distance of 45 miles, Imran started walking along the same road from Gujranwala to Lahore. If Kamran's walking rate was 3 miles per hour and Imran's was 4 miles per hour, how many miles had Imran walked when they met?
- A. 24
 - B. 23
 - C. 22
 - D. 21
 - E. 19.5

Verbal Section

Comprehension

Directions: Each passage in this sub-section is followed by questions based on its content. After reading a passage choose the best answer to each question from the five choices marked (A), (B), (C), (D) and (E). Then ll in the corresponding circle on your answer sheet.

We tend to think of ourselves as the only wholly unique creations in nature, but it is not so. Uniqueness is so commonplace a property of living things that there is really nothing at all unique about it. A phenomenon can't be unique and universal at the same time. Even individual, free-swimming bacteria can be viewed as unique entities, distinguishable from each other even when they are the progeny of a single clone. Spudich and Koshland have recently reported that motile microorganisms of the same species are like solitary eccentrics in their swimming behavior. When they are searching for food, some tumble in one direction for precisely so many seconds before quitting, while others tumble differently and for different, but characteristic, periods of time. If you watch them closely, tethered by their flagellae to the surface of an antibody-coated slide, you can tell them from each other by the way they twirl, as accurately as though they had different names.

Beans carry self-labels, and are marked by these as distinctly as a mouse by his special smell. The labels are glycoproteins, the lectins, and may have something to do with negotiating the intimate and essential attachment between the bean and the nitrogen-fixing bacteria which live as part of the plant's flesh, embedded in root nodules. The lectin from one line of legume has a special affinity for the surfaces of the particular bacteria which colonize that line, but not for bacteria from other types of bean. The system seems designed for the maintenance of exclusive partnerships. Nature is pieced together by little snobberies like this.

Coral polyps are biologically self-conscious. If you place polyps of the same genetic line together, touching each other, they will fuse and become a single polyp, but if the lines are different, one will reject the other.

1. What is the main idea of the passage?

- (A) Human beings are unique
- (B) Human beings are not unique
- (C) Uniqueness is a quality found in all living creatures**
- (D) Animals and plants are not so different after all
- (E) Nature is a well-regulated mechanism

2. What does the first paragraph tell us about bacteria?

- (A) They can be cloned
- (B) Individual bacteria have distinct personalities**
- (C) All bacteria have names
- (D) Bacteria have a strange swimming pattern
- (E) Bacteria behave differently in a laboratory

3. In the second paragraph, the author tells us that

- (A) Beans are infected by bacteria
- (B) Beans smell bad
- (C) Beans are similar to mice
- (D) Certain kinds of bean lectins have a liking for certain types of bacteria**
- (E) Certain bean lectins give off a certain smell

Sentence Completion

Directions: For each question in this sub-section select the letter corresponding to the word or pair of words from the given choices which best complete the sentence. Then fill in the corresponding circle on your answer sheet.

4. I believed the accountant had made a _____ but she insisted her work was _____.
- (A) error ... accurate
 - (B) blemish ... off
 - (C) mistake ... spot-on**
 - (D) blunder ... defective
 - (E) gaffe ... inaccurate
5. The tragedies reported in the newspaper were with a story on parental love for Mother's Day.
- (A) inflicted ... lighthearted
 - (B) balanced ... heartwarming**
 - (C) oscillated ... warm
 - (D) saturated ... easy
 - (E) forgiven ... amusing
6. Despite the _____ ordeal, the _____ young boy bounced back.
- (A) happy ... clever
 - (B) felicitous ... strong
 - (C) fortunate ... lucky
 - (D) terrible ... resilient**
 - (E) tough ... cumulous

Phrase Correction

Directions: Some or all parts of the following sentences are underlined. The first answer choice, (A), simply repeats the underlined part of the sentence. The other four choices present four alternative ways to phrase the underlined part. Select the answer that produces the most effective sentence, one that is clear and exact, and fill in the appropriate circle on your answer sheet. In

selecting your choice, be sure that it is standard written English and that it expresses the meaning of the original sentence.

7. Human resource professionals need to realize that current performance can only be part of an inputs to succession planning and promoting but not the only input.

- (A) inputs to succession planning and promoting
- (B) outputs to succession planning and promoting
- (C) inputs to session planning and promote
- (D) input to succession planning and promotion**
- (E) successful planning and promoting

8. In order to maintain the current level of funding for infrastructure, though impressive, has not resulted in the continuation of financial backing for the coming year.

- (A) In order to maintain the current level of funding for infrastructure, though impressive
- (B) Although maintaining the current level of funding for infrastructure, though impressive
- (C) Maintaining the current level of funding for infrastructure, though an impressive event**
- (D) The impressive attempts to maintain the current level of funding for infrastructure
- (E) Attempts to maintain the level of funding for infrastructure currently, though impressive

Mathematics Section

1. If x and y are positive integers with $x > y$ and $x+xy = 143$, what is the value of $x+y$?

- (A) 22
- (B) 23**
- (C) 24

(D) 25

(E) 21

2. There are 100 students in a class of which 36 boys are studying Maths and 13 girls are not studying Maths. If there are 55 girls in all, the probability that a boy picked up at random is not studying Maths is

(A) $\frac{3}{5}$

(B) $\frac{2}{5}$

(C) $\frac{1}{5}$

(D) $\frac{4}{5}$

(E) None of the above

3. Two lines intersect at one point. The set of all points that are equidistant from both lines (a point is equidistant if the perpendicular distance of the point to one line is the same as its perpendicular distance to the other line) can best be described by:

(A) The empty set

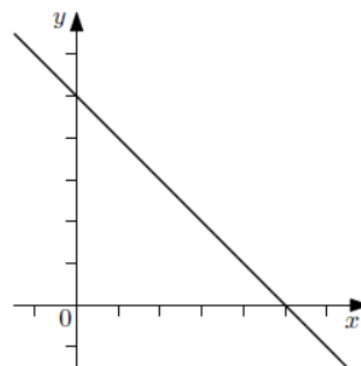
(B) A single point

(C) A straight line

(D) The union of two perpendicular lines

(E) A circle

4 In the figure, what is a possible equation of the dark line?



(A) $x = 5$

(B) $y = 5$

(C) $y = x + 5$

(D) $y = x - 5$

(E) $y = -x + 5$

5. Adil got 50% of the questions on a test correct. If he had 10 questions correct out of the first 12, and $\frac{1}{4}$ of the remaining questions correct, how many questions were on the test?

(A) 12

(B) 16

(C) 24

(D) 26

(E) 28