

Foto 13.3

Flashforge Newest Arrival Large-size HD 4K LCD Printer

Mass Production With Efficiency & Convenience

BUY NOW

Key Features



Larger
Build Volume



Superior Printing
Performance



High
Precision



Fast
Print Speed



Easy
Maintenance



Better
Print Experience

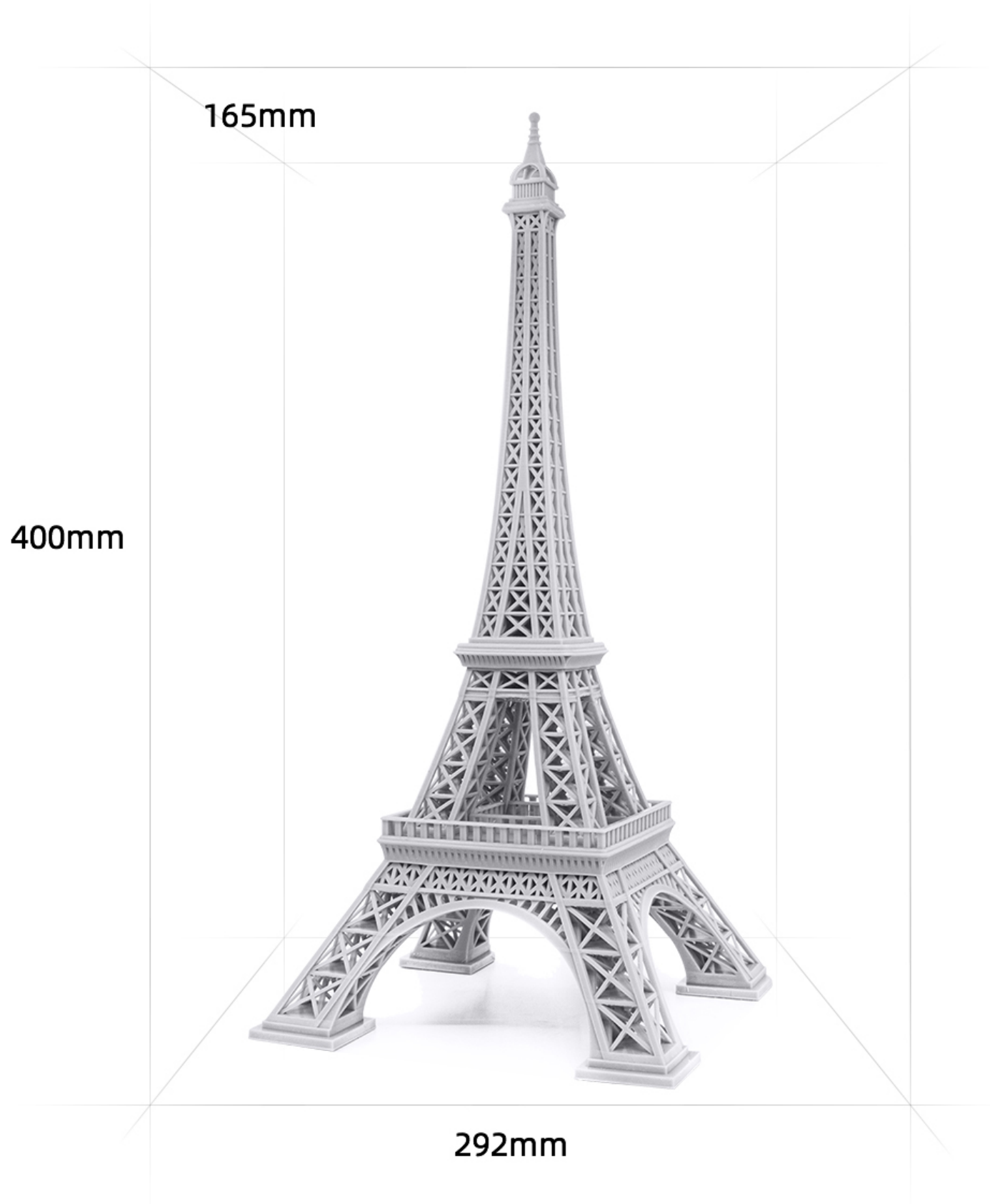
Larger Build Volume



Build Volume **292*165*400 mm** Print Volume **19L**

The printing size is 4 times larger than other LCD printers.

Feedback



Model printed by common rod motor

Model printed by Foto 13.3



Superior Printing Performance

Defects frequently appear on models printed by normal 3D printers with a rod motor, while Flashforge Foto 13.3 well eliminates this defect. Its supported by dual-linear-rail ball screw which dramatically improves steppers motion stability and reduces layer lines.



High-precision Printing

For prototype designers and makers, the model parts printed by Foto 13.3 can be used directly without polishing, which improves business productivity; while for the model printed by other printers, it takes at least 1/4 extra time for surface polishing.

For service providers and factories, it's now possible to batch print and deliver high-accuracy products such as jewelry and replacement parts to customers directly. The printed hair ornament model can be inlaid with diamonds after painting.

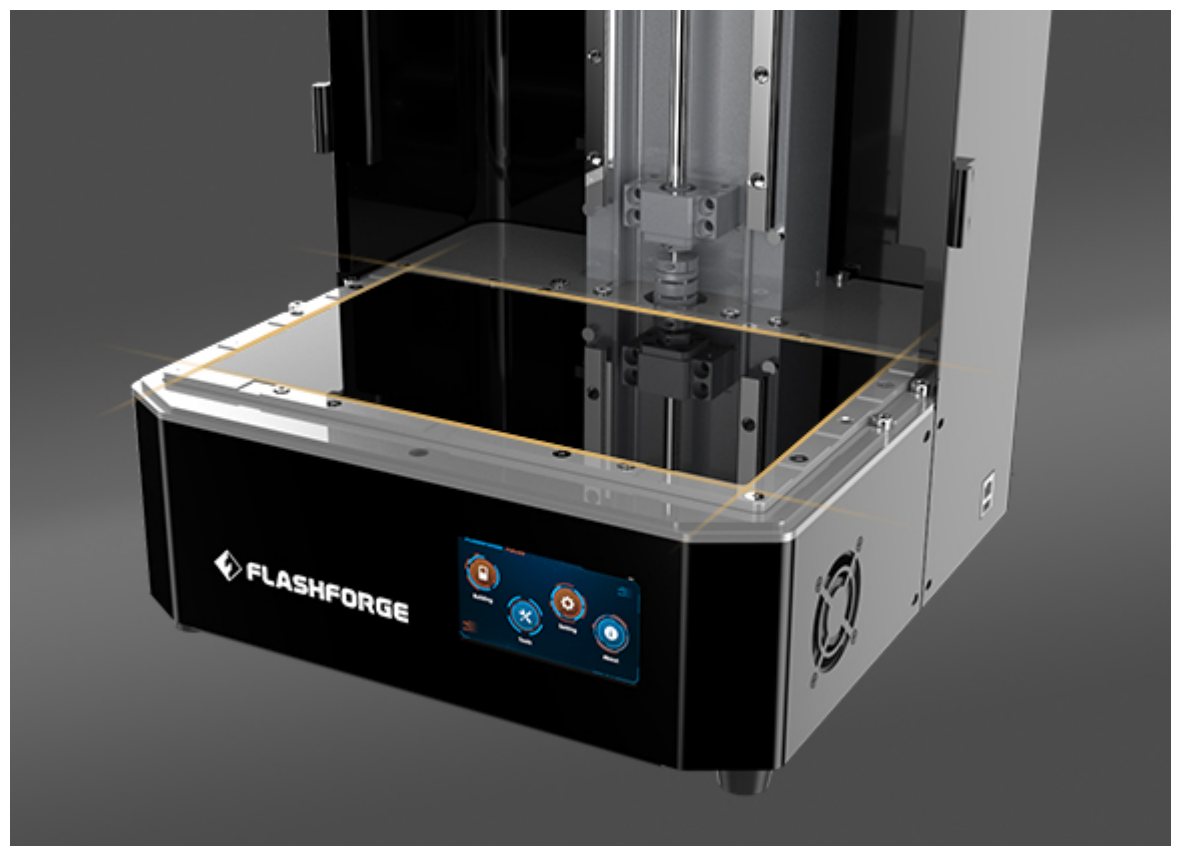
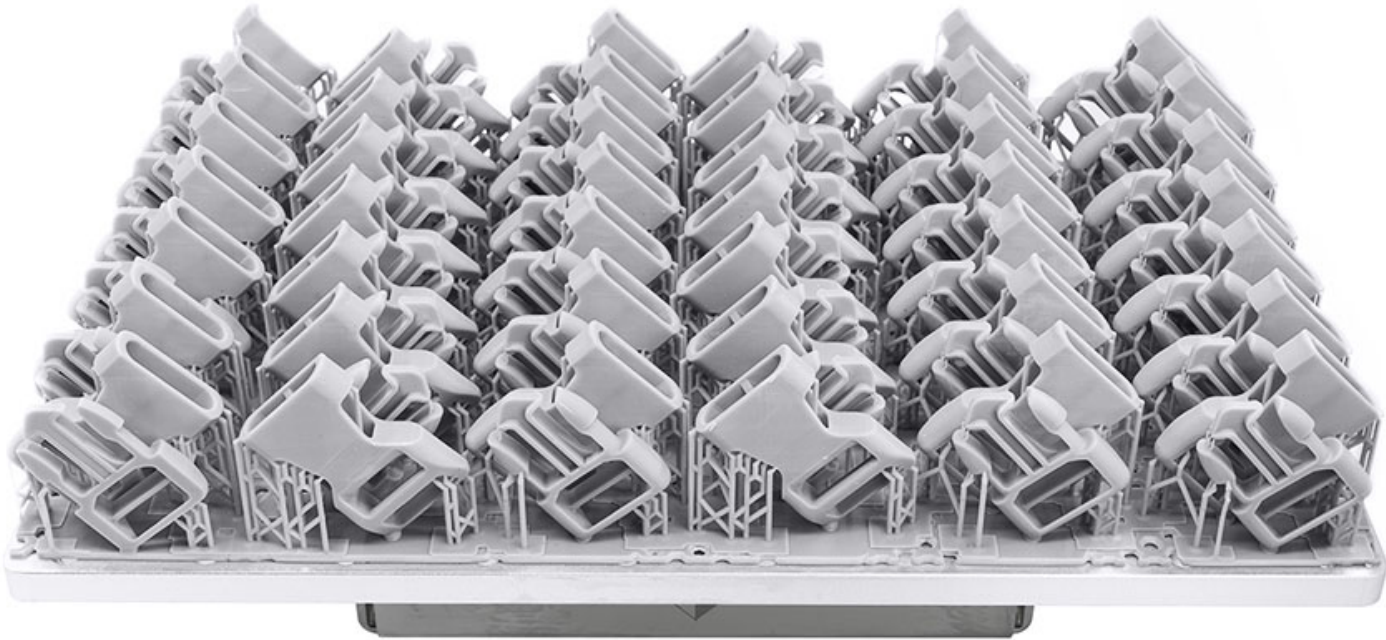


Large Build Volume and Fast Printing

4K monochrome screen of Foto 13.3 approves faster layer exposure, 3 times faster than other normal 3D printers. Large-size Foto 13.3 LCD printer offers industrial designers and makers new possibilities, and improves the production efficiency of service providers and factories.

- Firstly, compared to other printers with Laser Cladding Deposition technology, the output of Flashforge Foto 13.3 lcd resin printer is doubled.
- Secondly, compared to other SLA printer with similar size, the printing time is reduced to 1/3 at least

7x6=42



Easy Maintenance

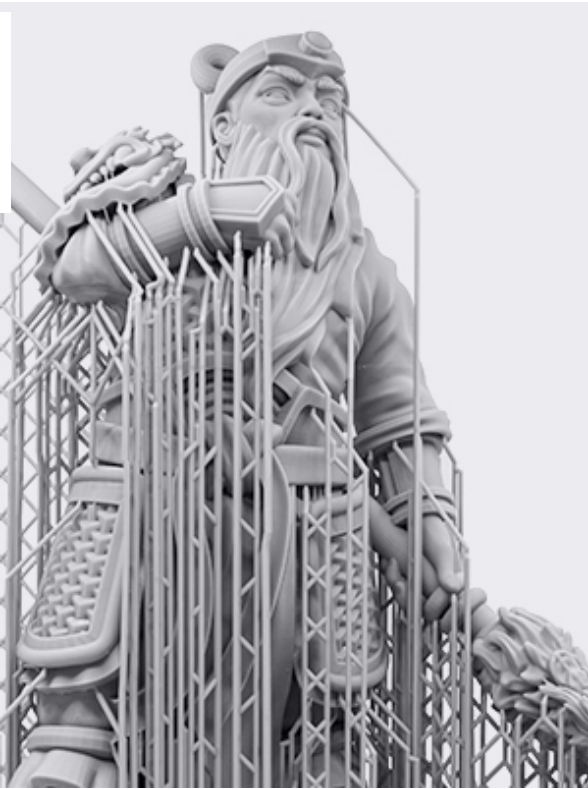
The projection LCD screen is a quick disassembling module. It only takes a few steps (unscrewing and disconnect the cables) to replace the screen, time reduced by 2/3. Users will face less difficulty and less risk on screen maintenance.

The specially treated industrial screen of Foto 13.3 is resistant to scratch and ram. Together with the efficient cooling system, its service life is increased by 20%.

Best Matching with Flashforge Resin

All types of Flashforge resin, including the standard resin, water-washable resin and ABS-like resin, work well with Flashforge Foto13.3. Flashforge resin emits less odor and gets easier to use.

Feedback



Standard resin

Flashforge standard resin performs well on printout details, low shrinkage rate, easy painting.



ABS-like resin

Flashfroge ABS-like resin gets advanced in model toughness. Well applied in business batch production.



Water-washable resin

Flashforge water-washable resin has all the features owned by another two types of resin. Models printed with this resin just need water for cleaning, no need of other solvents.

Specifications

Printing

Layer Thickness	0.05-0.15 mm (adjustable)
Print Volume	292*165*400 mm (11.5*6.5*15.7 IN)
Print Precision	±0.05 mm
Print Speed	10-30 mm/h
Language	Chinese / English

Electrical

Power	150W
Connectivity	USB, Ethernet

Mechanical & Dimension

Printer Dimension	380*380*685 mm (15*15*27 IN)
Screen	4.5-inch touch screen
Net Weight	35.5kg (78.3 LBS)
Gross Weight	42kg (92.6 LBS)

Software

Software	FlashDLPrint
File Input Format	3MF / STL / OBJ / FPP / SLC files
File Output Format	SVGX

BUY NOW

Feedback

3D PRINTER SOLUTION

- Dental Industry
- Jewelry Industry
- 3D Channel Letter

3D PRINTER CATEGORY

- Professional
- Consumer
- Material
- Software

SUPPORT

- Video Center
- After-Sales Policy
- Download Center
- FAQ
- Privacy Policy

JOIN OUR NEWSLETTER

Email address

Subscribe

400-886-6023

[About Us](#) | [Contact Us](#) | [News Center](#) | [Distributor](#) | [Site Map](#)